

Thank you for purchasing a Screen Technics Projection Screen, please ensure that you read the following instructions fully before attempting to install this product.

STEP 1. Layout all components ready for assembly as shown

Note: Box Section Frame will be supplied

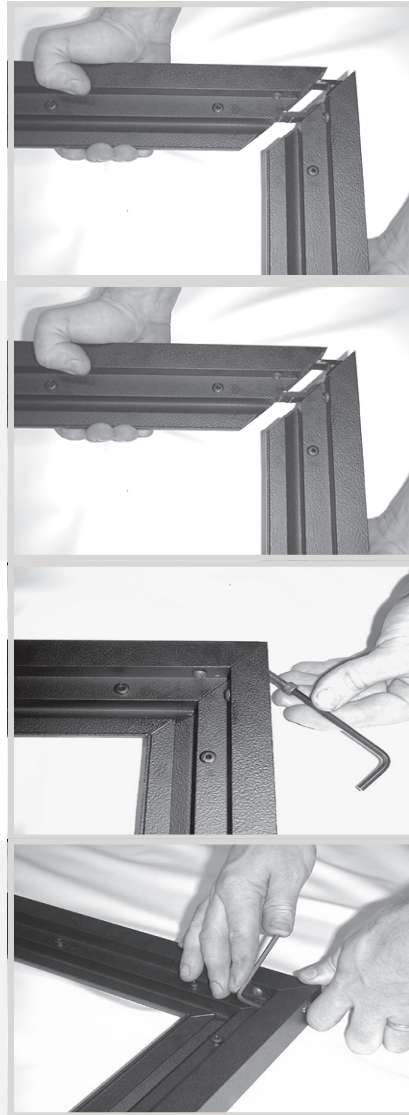
STEP 2. Push the four corners of the frame together. Due to frame size, you may need to join frame pieces, you may need to use a plastic or wooden mallet (not metallic) to achieve this result.

STEP 3. With the Hex Head Allen-Key screws use the provided Allen-Key to screw tight all four corners. You must ensure each of the four corners are square and there are no large gaps obvious **before** you start to insert Hex head Allen-Key screw, otherwise jamming may occur.

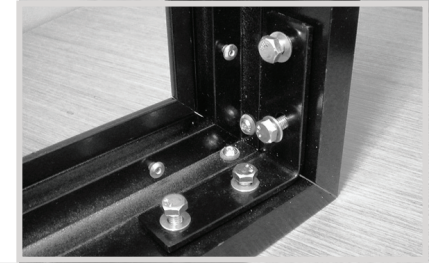
Note: Box Section Frame will be supplied

STEP 4. Tighten all internal Allen-Key screws (one on each corner as shown below), before fully tightening the external screws.

Note: Box Section Frame will be supplied

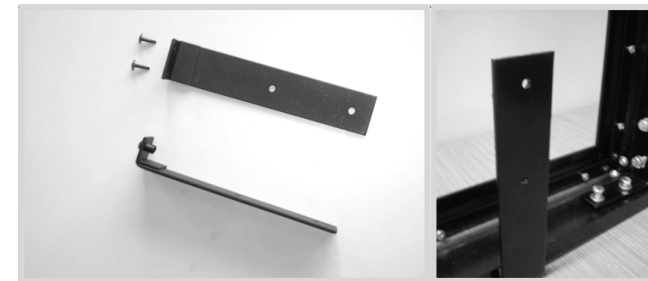


STEP 4A. Place corner brackets in each corner of frame (as shown)



STEP 5. It is now time to install the L-Shaped brackets and there are two options:

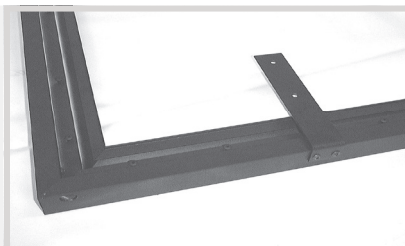
- The brackets come supplied with self-tapping (Tek) screws that allow you to drill directly into the frame, anywhere that best suits wall stud supports and the like. Later on in the installation you will need enough room to re-screw these Tek screws top and bottom of the frame for final fixing.
- If you don't have enough "elbow" room to get at the top of frame with a power or screw driver at this latter time because of a low ceiling then utilize the nylon bushes supplied with the small Allen-Key bolt and fix one each to the two top L-Brackets and use the two locating holes on the top of the frame, although this restricts bracket positioning it allows you to simply insert the bushes into the holes and then fix the bottom brackets by screws and your done.



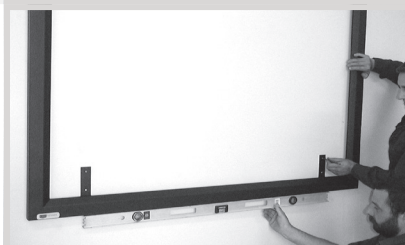
Larger Wall Brackets supplied with XL version

Continued Over.../

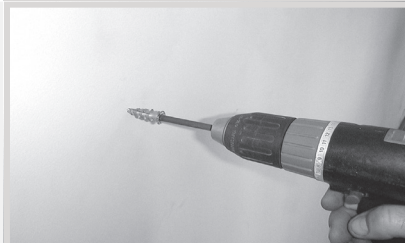
STEP 6. Attach brackets as shown – Utilizing nylon bushes and locating holes only if necessary as explained in previous step.



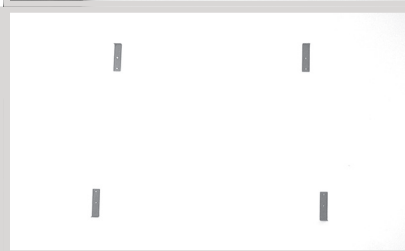
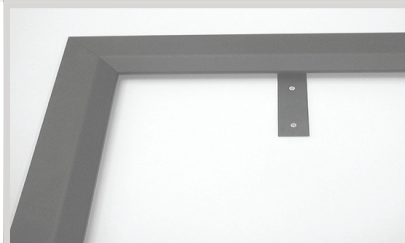
STEP 7. With all four brackets attached, place screen frame (not with surface) on the wall and mark holes.



STEP 8. Use wall mates or plugs to attach frame if no wall studs are present and ensure that you have a secure fixing method for a safe installation.



STEP 9. Remove frame from the wall by undoing outside bracket screws – Brackets are to remain on wall.



PREPARE SCREEN SURFACE

Please do not allow the steel rods to come into contact with the screen surface viewing area as it may cause damage.

STEP 10. Place a drop sheet on the floor to protect the front of the projection surface. Slide all four steel rods into the sleeve surrounding the screen surface.

Note: Make sure that rods are even in the screen sleeve and not overlapping on the corners.

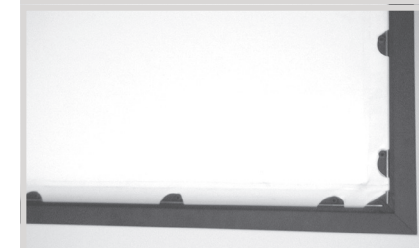


STEP 11. Once all four rods have been placed into the screen sleeve, attach the screen surface to the frame as shown below – ensuring to work the screen surface evenly to all four sides.

This will require minimum two people to complete and will require quite a bit of force to stretch the surface onto the XL frame.

Attach surface at top centre and stretch and attach at bottom centre then stretch and attach to left and right centre.

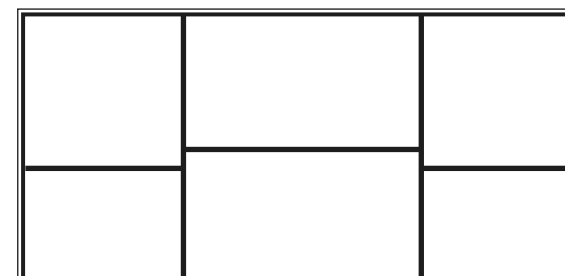
Then progressively attach surface on all four sides moving from centre point towards the corners.



STEP 12. Now install spreader bars, you will find the aluminium blocks inserted in the frame on the vertical and horizontal frame pieces to attach the bars.

Install the vertical spreader bars first, due to the force of the projection surface you will see a bow in the top and bottom of the frame, you will need to pull the frame apart to install the vertical spreader bars, then install the horizontal spreader bars

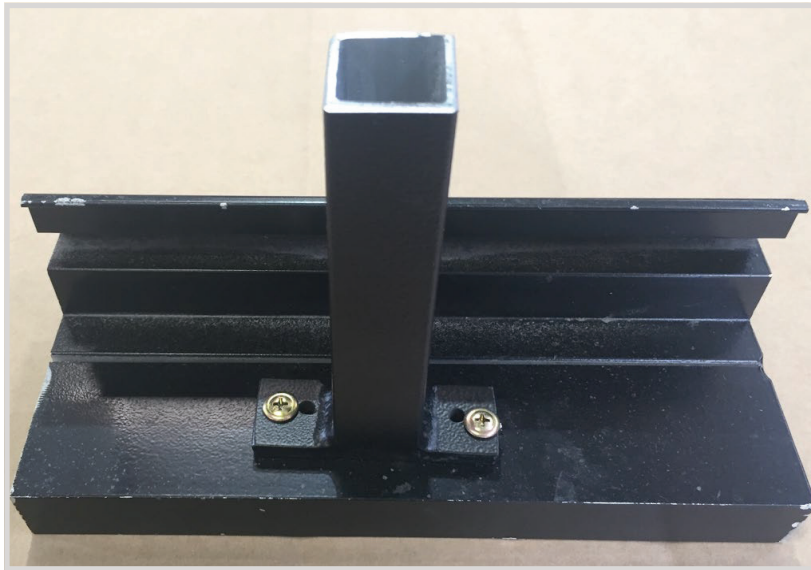
Example of vertical and horizontal spreader bars



Depending on the size and height of CinemaSnap frame – Number of spreader bars with change

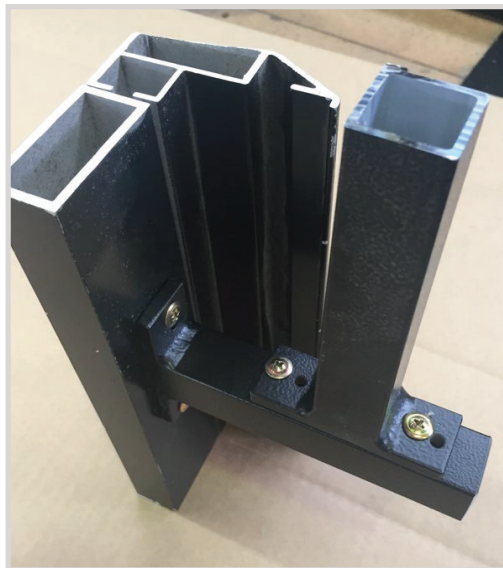
Continued Over.../

Example of Horizontal Spreader Bar Mounting



Horizontal Spreader Bars are screwed to frame top and bottom as shown above using supplied (TEK) screws

Example of Vertical Spreader Bar Mounting



Vertical Spreader Bars are screwed to the horizontal spreader bars as shown above using supplied (TEK) screws

STEP 13. Attach the screen to the brackets on wall – Wipe down screen frame of any fingerprints and dust off the screen surface.

Please follow these instructions to ensure trouble free operation;

- Cleaning of the screen is best achieved by first dusting the surface with a feather duster, then to remove any stubborn marks, use a small amount of mild detergent and warm water on a clean white lint free cloth. It is most important that you only treat the actual mark by this process and not the entire surface.
- Do not use any abrasive cleanser as this will damage the surface.

Should you have any questions regarding the installation of our projection screens please call our technical sales desk on +61 2 4869 2100 for assistance.