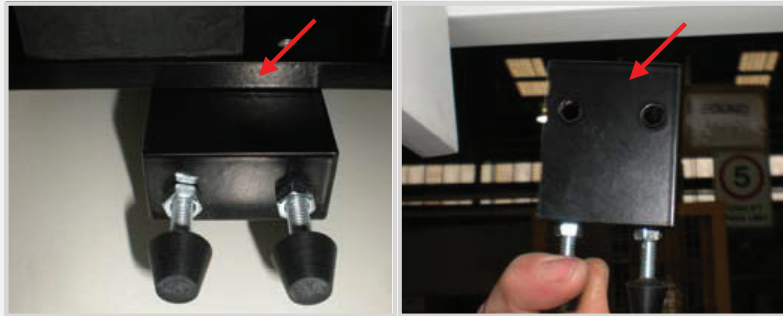


Please read the unpacking instruction before starting on the replacement of the screen surface or attempting to remove the replacement screen from the transport box. Failure to read the unpacking instructions may result in damage to the replacement screen surface.

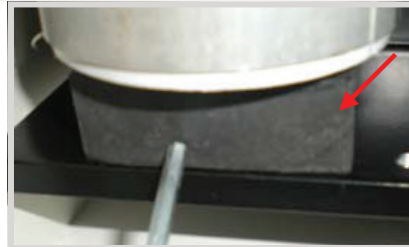
STEP 1. Disconnect the power to the unit.

STEP 2. Open both the doors on ElectriCinema 235, please make a note of the screen surface position when it is full up and fully down. This will be needed when resetting the limits later on.

STEP 3. Remove the door stop bracket on the right hand side only using a 4mm Allen key



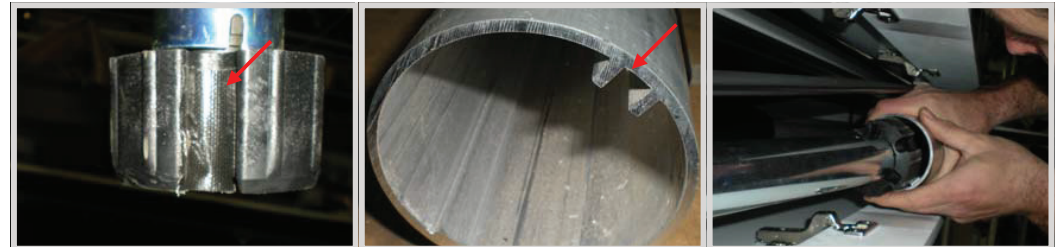
STEP 4. Remove rubber block on the right hand side only using a 4mm Allen key



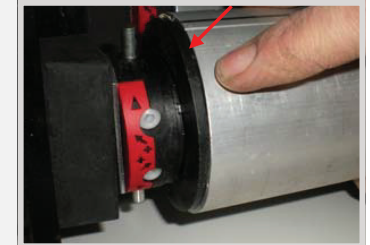
STEP 5. Slide out screen surface roller, leaving motor on the left hand side in the place.



STEP 6. Slide the replacement screen surface and tube over the motor, making sure that the tape on the motor drive lines up with the key way in the screen surface tube. (Shown in pictures below)



STEP 7. Make sure that the screen surface tube is flush with the flange on the motor side (as shown in the picture right)



STEP 8. Replace rubber block using a 4mm Allen Key

STEP 9. Replace door stop using a 4mm Allen Key

Continued Over.../

STEP 10. Once all the bolts have been tightened, reconnect the power to the screen connect motor controller only.

If it is not possible to only connect the one motor controller you will need to be careful when setting the limits to only operate the screen using the first channel of buttons on the remote control.

STEP 11. You will need to reset the top and bottom limits on the screen as the surface will be hanging down lower than its original position, when adjusting the bottom limit you will need to be careful that you do not go past the physical limit of the surface causing the screen surface to unattached from the roller.



LIMIT SETTING FOR CONNECT ELECTRICINEMA SCREENS

The following instructions are for the adjustment of the limit switches that alter the upper and lower stop positions on "Connect" ElectriCinema Screens only.

WHERE ARE THE LIMIT SWITCHES?

Open the doors on the ElectriCinema 235, on the left hand side of the screen you will see the motor and the two limits (see picture)



WHICH SWITCH IS FOR UP AND DOWN?

Down switch - located at the back of the unit
Up switch - located at the front of the unit

WHAT TOOLS DO I NEED?

Either the limit setting tool (supplied), a narrow tip screw driver (less than 4mm) or a 4mm Allen Key

WHICH WAY DO I TURN THE SWITCH?

Either Clockwise always increases the amount of rotation (travel) of the motor.

Anti-clockwise always reduces the amount of rotation (travel) of the motor.

So pick the switch responsible for the limit position, up or down. Clockwise turning of the switch will always let the motor travel further in that direction. Anti-clockwise turning of the switch will lessen the amount of travel in that direction.

CAN I ADJUST THE SWITCH WHILE THE SCREEN IS SITTING ON THE LIMIT - I.E. FULLY UP OR DOWN?

Clockwise adjustment? - YES. But it is better to back the screen away from the limit and then adjust.

Anti-clockwise adjustment? - NO you will damage the micro switch if you turn it anti-clockwise while the screen is sitting on the limit. Never attempt this. You must back the screen away from the limit before adjustment.

After adjustment you will need to run the screen up and down to pick up the new limit.

WILL I VOID THE PRODUCT WARRANTY IF I DAMAGE THE SCREEN WHILST MAKING THESE ADJUSTMENTS?

Yes.

STEP 12. Once the top and bottom limits have been set, close both the doors on the unit and reconnect the remaining motor controllers.

STEP 13. Place the original screen into the packaging supplied for the replacement and repack in the same manner as the replacement was received. Once the screen has been packed up please let Screen Technics know and we will arrange for it to be collected and return to us for evaluation.

Should you have any questions regarding the installation of our products, please call our sales desk on +61 2 4869 2100 for assistance