

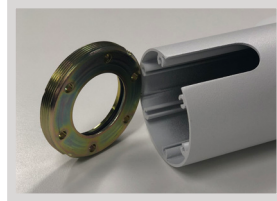
Thank you for purchasing a Screen Technics Interfit Projector Bracket and please read the following instructions before attempting to install a projector.

In your package you will have several parts that require assembly to create a basic Flush Style Interfit Projector Bracket, if you have purchased an extension post please read that section separately as listed below.

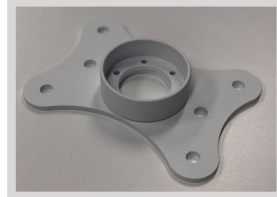
1. Projector Mounting Head - which has the spider arms, ball joint and threaded adjustment collar.



2. Central Post - which varies in length according to model purchased, with removable threaded head ring.



3. Ceiling Plate - with base collar for post mounting.



STEP 1. Step 1 - Attach the Projector Mounting Head assembly to the projector, by loosening the Allen Key (6mm) on top of the nylon ball joint, this in-turn loosens the Spider Arms to enable movement to locate the appropriate projector mounting holes.

Utilise the supplied bolts, 4 off (M4, M5, M6) to secure projector to Spider Arms, being careful not to screw down too far as this may "bottom out" the bolts in the threaded holes in the projector, as this could damage the projector unit.

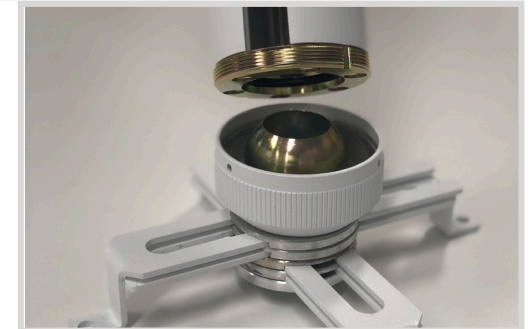
It is the installer's responsibility to ensure that the supplied bolts are suitable for the fitting task and we recommend that at least 5mm of bolt thread be utilised in fitting the projector.

STEP 2. Locate the Ball Joint assembly centrally (approx) over the spider arms, that are now attached to the projector and re-tighten the 6mm Allen Key bolt, locking the arms into position. NB: This movement of the ball joint within the arms radius area can be utilised after the mount is attached to the ceiling for any minor side sideways or front to back adjustment if required.

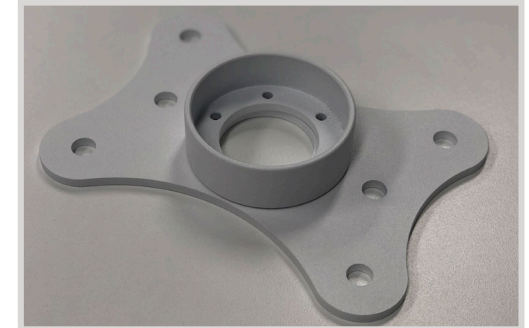
STEP 3. Now connect the mounting post (6 Screws) to the ceiling plate / collar assembly and secure the ceiling plate to a suitable structure - never attach directly to plaster ceiling without additional support - and decide on the best solution for cable management.

CABLE MANAGEMENT - It is possible to use the mounting post for cable runs, just unscrew the Threaded Head Ring (6 screws) and pass the cable heads through the post and place the mid sections of the cables in the cable exist cut-out and re-attach the Threaded Head Ring. Repeat the process if required at the ceiling plate end or simply run the cables through the open end of the ceiling plate.

STEP 4. Now you have the ceiling plate assembly fixed to a suitable structure, the cable laid out as discussed above, it is now time to attach the projector mounting head assembly - which has the projector currently installed upon it - by holding it in position at the end of the post where the threaded head ring is attached and utilise the threaded adjustment collar to screw the two assemblies together.



The threaded adjustment collar tightens around a brass ball joint which will provide adjustment for pitch and yaw when lightly tightened, and locks into position when fully tightened. Please note that no real force need be applied to the tightening of this collar, hand-tight will be sufficient for the task.



Continued Over.../

OPTIONAL ACCESSORIES AVAILABLE

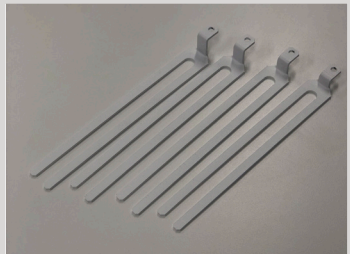
TRIM KIT "THOUGH CEILING" MID-POLE STYLE

For when the mounting post runs straight through the plaster ceiling and onto a structure above, small circular trim piece, with grub screw attachment, to cover the cut edge of the hole.



EXTRA LONG SPIDER ARMS

The standard spider arms can achieve projector coverage of 160mm from centre-point (320mm Diameter), these extra long arms give 220mm from Centre-point (440mm Diameter) for those extra big projectors. Just loosen the Allen Key bolt that runs through the Projector Mounting Head and the arms simply slid out to be replaced with the longer versions, then re-tighten Allen key bolt.



WIDE COLLAR

Designed to replace standard ceiling plate collar, when the post is cut down on-site. This collar is designed to square up the post assembly which may not be able to be cut square on-site, by hand. Simply unscrew (6 screws) to ceiling plate and collar assembly and swap the collars over to receive the newly cut post.

