



# Admiral



## Admiral Bottom Roller Screen

For indoor projects that require a motorised screen with image widths of 6500mm or over. The bottom roller design gives the best possible lay flat for these challenging installations

SIZES 350" to 600"



### Market Segments:



Education



Worship



Sports Venues



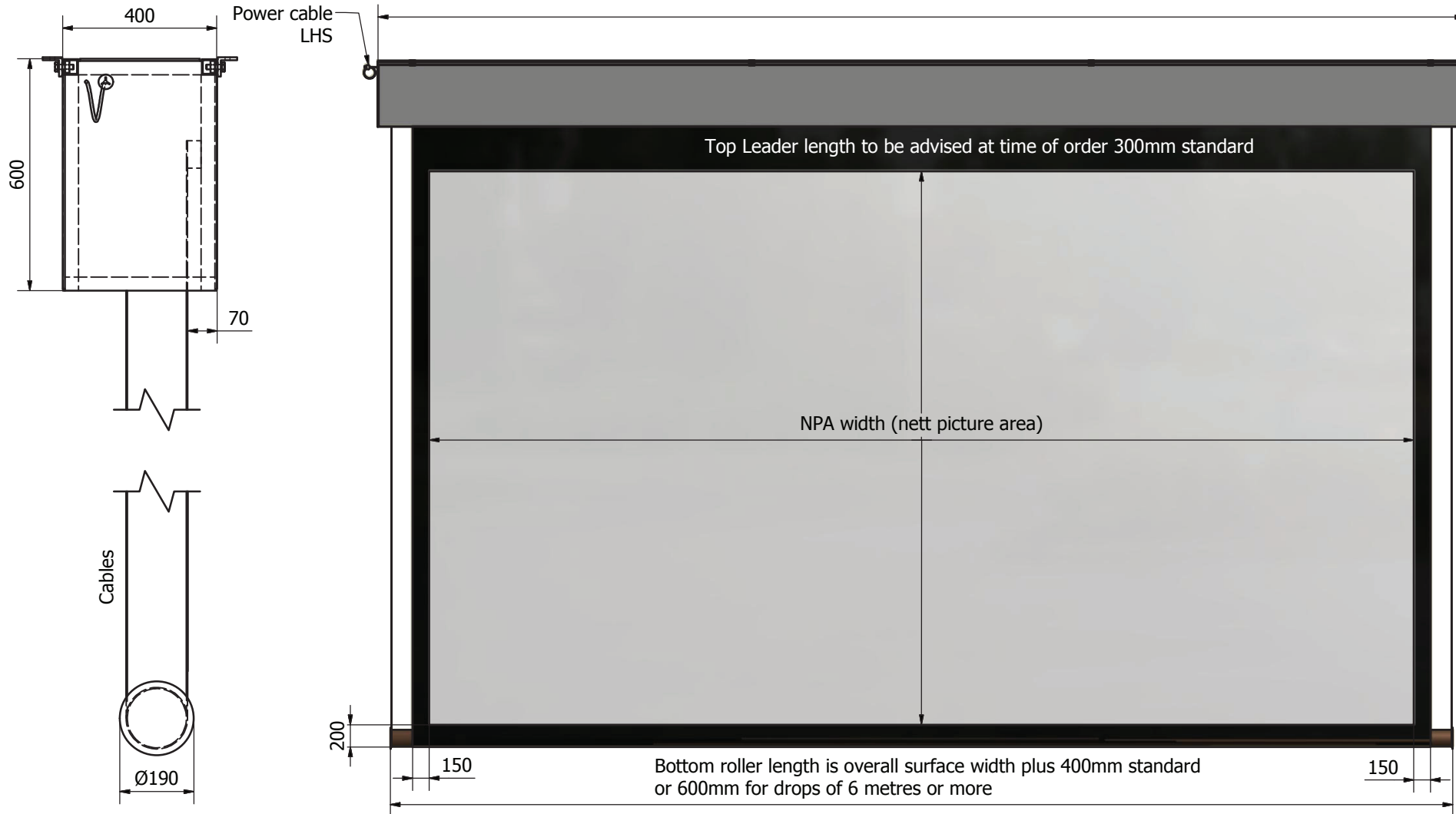
Hotels & Entertainment

### Features include:

- For screens greater than 6.5m wide
- Fire rated surface
- Custom sizes and formats available
- Bottom roller design
- Steel box frame construction



Headbox Length = NPA width + 920mm when drop is below 6 Metres  
 Headbox Length = NPA width + 1120mm when drop is above 6 Metres



**NOTES:**

- Requires at least 4 x pairs of fixing points to secure structure
- Steel box frame clad in MDF sheet

Full technical drawings and installation instructions can be found on our website  
 Manufacturing tolerance +/- 10mm on headbox and bottom roller.  
 All dimensions are in (mm). If installed in ceiling always allow for removal for servicing.

The Concept, Design and Details in this drawing are the property of Screen Technics with whom the copyright resides. They may not be reproduced without written permission of Screen Technics.

Date  
16/07/2019

Rev  
04

**Product Features**

**DESCRIPTION:**

Large Commercial motorised screen

**SURFACE:**

Unity White PVC - Gain 1.0, Refer to screen material options for additional surface options. This screen will have a welded surface.

**HEAD BOX:**

Matt Black

**BORDERS:**

150mm Sides & 200mm Bottom, top leader length needs to be specified at time of order

**BRACKETS:**

P1000 Uni-Strut Bracket System

**SIZES:**

350" Diagonal to 600" Diagonal  
Custom Sizes & Formats available upon request

**ROLLER DIAMETER:**

190mm Heavy Duty

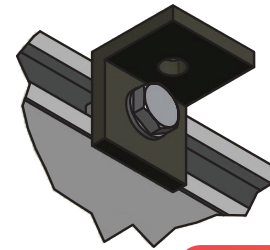
**OPTIONS:**

Extra Top Masking, Connect iP Control, custom powder coat colours

ITEM NO	INCH DIAGONAL	IMAGE SIZE mm	FORMAT	HEADBOX SIZE mm	WEIGHT Kg
0965009	n/a	6500 x 6500	Square	7620	310
0970009	n/a	7000 x 7000	Square	8120	330
0980009	n/a	8000 x 8000	Square	9120	370
0935019	350"	5330 x 7110	Video 4:3	8030	335
0940019	400"	6100 x 8130	Video 4:3	9350	380
0945019	450"	6860 x 9150	Video 4:3	11190	420
0950019	500"	7620 x 10160	Video 4:3	11280	460
0935029	350"	4355 x 7745	HDTV 16:9	8665	360
0940029	400"	4980 x 8855	HDTV 16:9	9775	410
0950029	500"	6225 x 11065	HDTV 16:9	12185	500
0955029	550"	6850 x 12175	HDTV 16:9	13295	545
0960029	600"	7470 x 13280	HDTV 16:9	14400	580
0935069	350"	4715 x 7540	16:10	8460	350
0940069	400"	5385 x 8620	16:10	9540	400
0950069	500"	6735 x 10775	16:10	11895	485
0955069	550"	7405 x 11850	16:10	12970	530
0960069	600"	8080 x 12930	16:10	14050	570

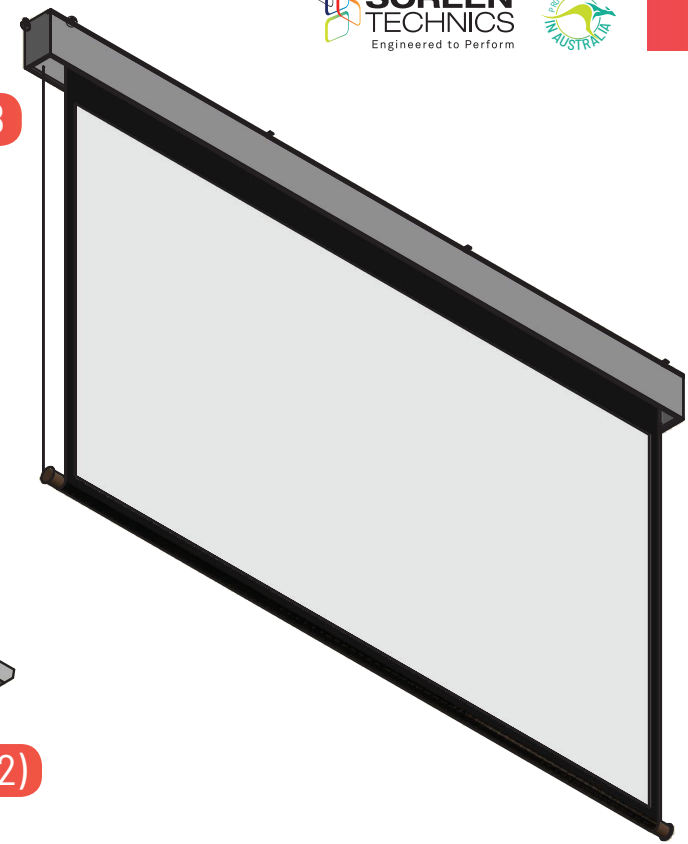
Full technical drawings and installation instructions can be found on our website  
Manufacturing tolerance +/- 10mm on headbox and bottom roller.

All dimensions are in (mm). If installed in ceiling always allow for removal for servicing.



**B (1:2)**

**B**



**NOTES:**

- P1000 Unistrut bracket system allows variable position fixing points
- Requires at least 4 x pairs of fixing points to secure structure
- Steel box frame clad in MDF sheet. Finished in black unless specified otherwise

**ARCHITECTS SPECIFICATION**

The projection screen shall be an Australian made Screen Technics Admiral Bottom Roller model 09\_\_\_\_\_ with Unity White PVC surface and shall be located where indicated on the plans. Installation shall be done in accordance with the manufacturer's instructions.



**AUSTRALIA**

22-24 Suttor Road

Moss Vale NSW 2577

+61 2 4869 2100

screeentechnics.com.au • info@screeentechnics.com.au

**NEW ZEALAND**

44 Mahana Road

Te Rapa, Hamilton

+0800 022 821