

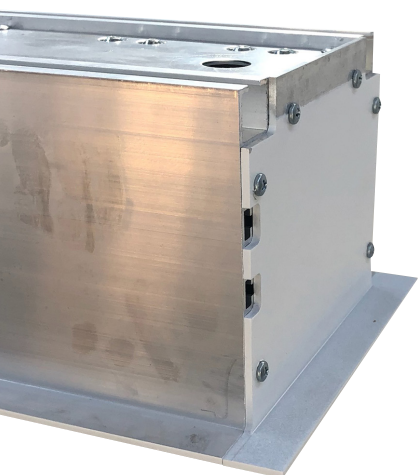


MasterFit B(+)(Plus)

Convenient one-stop installation

SIZES 120" - 150"

An integrated in-ceiling screen solution designed for installation from below the ceiling line. Uses a custom designed aluminium box for a lightweight solution, yet still provides structural integrity.



Market Segments:



Home
Entertainment



Education



Government



Defense



Boardroom



Corporate

Benefits include:

- Fully integrated with IR
- 12V trigger
- Contact closure
- Option to upgrade to Connect IP control



Product Features

- An integrated in ceiling screen solution designed for a one-stop installation from below the ceiling line
- Boxes are supplied with 4 x M8 eyebolts. Threaded rod is not supplied
- Utilises a custom designed aluminium box for lightweight solution but still providing structural integrity
- Connect Infra red and dry contact control as standard - upgradeable to Connect IP control

ITEM NO	INCH DIAGONAL	IMAGE SIZE mm	FORMAT	BOX LENGTH mm	BOX HEIGHT mm	BOX DEPTH mm	WEIGHT (kg)
MF12019-B+	120"	1830 x 2440	Video 4:3	2992	127	170	42.0
MF13019-B+	130"	1980 x 2640	Video 4:3	3192	127	170	44.0
MF14019-B+	140"	2135 x 2845	Video 4:3	3397	127	170	46.0
MF15019-B+	150"	2285 x 3050	Video 4:3	3602	127	170	49.0
MF12029-B+	120"	1495 x 2655	HDTV 16:9	3207	127	170	44.0
MF13029-B+	130"	1615 x 2880	HDTV 16:9	3432	127	170	46.0
MF14029-B+	140"	1740 x 3100	HDTV 16:9	3652	127	170	48.0
MF15029-B+	150"	1865 x 3320	HDTV 16:9	3872	127	170	51.0
MF12069-B+	120"	1615 x 2585	16:10	3137	127	170	43.0
MF13069-B+	130"	1750 x 2800	16:10	3352	127	170	46.0
MF14069-B+	140"	1885 x 3015	16:10	3567	127	170	48.0
MF15069-B+	150"	2020 x 3230	16:10	3782	127	170	50.0

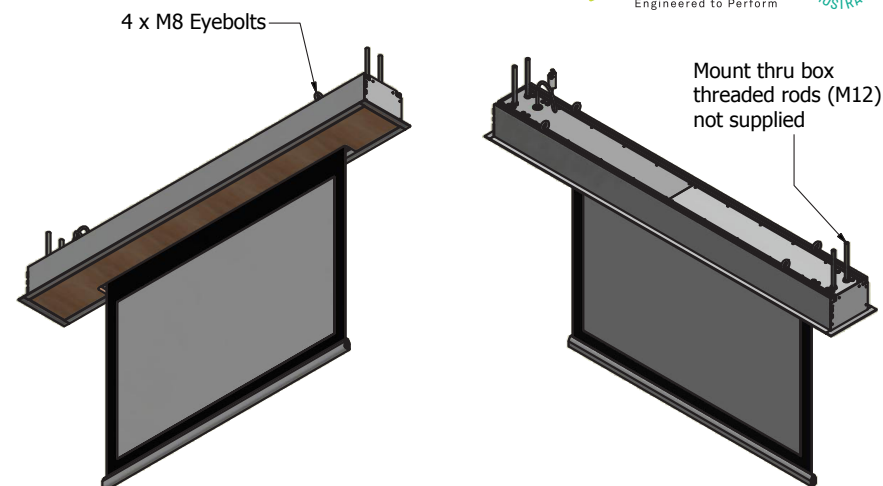
ARCHITECTS SPECIFICATION

The projection screen shall be an Australian made Screen Technics MasterFit Type B+ model _____ with Unity White Black Backed Fibreglass surface and shall be located where indicated on the plans. Installation shall be done in accordance with the manufacturer's instructions.

NOTES:

- MasterFit + boxes are 160mm longer than the standard MasterFit boxes
- This allows for mounting through its own hole using threaded rods at each end
- Mounting straps not used on this model

Manufacturing tolerance +/- 5mm on in ceiling box and slatrod
All dimensions are in (mm)
Always allow for removal of screen for servicing.



Product Features

- An integrated in ceiling screen solution designed for a one-stop installation from below the ceiling line
- Boxes are supplied with 4 x M8 eyebolts. Threaded rod is not supplied
- Utilises a custom designed aluminium box for lightweight solution but still providing structural integrity
- Connect Infra red and dry contact control as standard - upgradeable to Connect IP control

ITEM NO	INCH DIAGONAL	IMAGE SIZE mm	FORMAT	BOX LENGTH mm	BOX HEIGHT mm	BOX DEPTH mm	WEIGHT (kg)
MF12018-B+	120"	1830 x 2440	Video 4:3	2992	127	170	42.0
MF13018-B+	130"	1980 x 2640	Video 4:3	3192	127	170	44.0
MF14018-B+	140"	2135 x 2845	Video 4:3	3397	127	170	46.0
MF15018-B+	150"	2285 x 3050	Video 4:3	3602	127	170	49.0
MF12028-B+	120"	1495 x 2655	HDTV 16:9	3207	127	170	44.0
MF13028-B+	130"	1615 x 2880	HDTV 16:9	3432	127	170	46.0
MF14028-B+	140"	1740 x 3100	HDTV 16:9	3652	127	170	48.0
MF15028-B+	150"	1865 x 3320	HDTV 16:9	3872	127	170	51.0
MF12068-B+	120"	1615 x 2585	16:10	3137	127	170	43.0
MF13068-B+	130"	1750 x 2800	16:10	3352	127	170	46.0
MF14068-B+	140"	1885 x 3015	16:10	3567	127	170	48.0
MF15068-B+	150"	2020 x 3230	16:10	3782	127	170	50.0

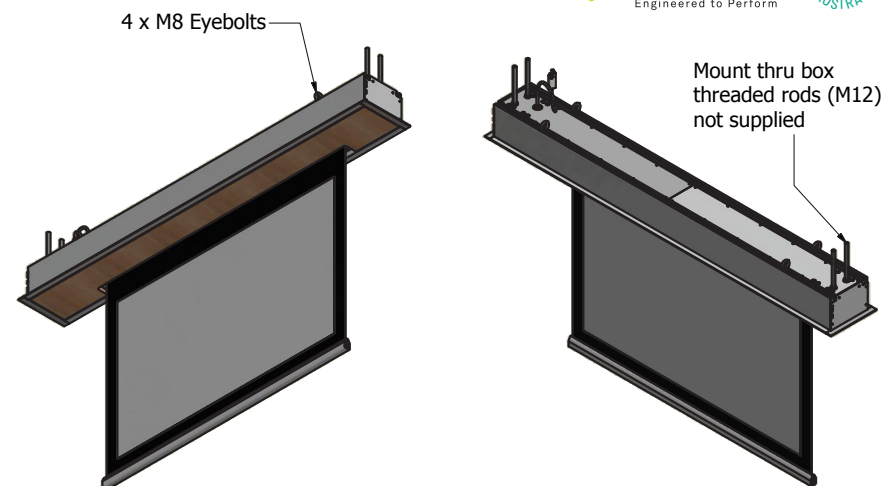
ARCHITECTS SPECIFICATION

The projection screen shall be an Australian made Screen Technics MasterFit Type B+ model _____ with Hi-Contrast Grey Black Backed Fibreglass surface and shall be located where indicated on the plans. Installation shall be done in accordance with the manufacturer's instructions.

NOTES:

- MasterFit + boxes are 160mm longer than the standard MasterFit boxes
- This allows for mounting through its own hole using threaded rods at each end
- Mounting straps not used on this model

Manufacturing tolerance +/- 5mm on in ceiling box and slatrod
All dimensions are in (mm)
Always allow for removal of screen for servicing.



Product Features

- An integrated in ceiling screen solution designed for a one-stop installation from below the ceiling line
- Boxes are supplied with 4 x M8 eyebolts. Threaded rod is not supplied
- Utilises a custom designed aluminium box for lightweight solution but still providing structural integrity
- Connect Infra red and dry contact control as standard - upgradeable to Connect IP control

ITEM NO	INCH DIAGONAL	IMAGE SIZE mm	FORMAT	BOX LENGTH mm	BOX HEIGHT mm	BOX DEPTH mm	WEIGHT (kg)
MF12012-B+	120"	1830 x 2440	Video 4:3	2992	127	170	42.0
MF13012-B+	130"	1980 x 2640	Video 4:3	3192	127	170	44.0
MF14012-B+	140"	2135 x 2845	Video 4:3	3397	127	170	46.0
MF15012-B+	150"	2285 x 3050	Video 4:3	3602	127	170	49.0
MF12022-B+	120"	1495 x 2655	HDTV 16:9	3207	127	170	44.0
MF13022-B+	130"	1615 x 2880	HDTV 16:9	3432	127	170	46.0
MF14022-B+	140"	1740 x 3100	HDTV 16:9	3652	127	170	48.0
MF15022-B+	150"	1865 x 3320	HDTV 16:9	3872	127	170	51.0
MF12062-B+	120"	1615 x 2585	16:10	3137	127	170	43.0
MF13062-B+	130"	1750 x 2800	16:10	3352	127	170	46.0
MF14062-B+	140"	1885 x 3015	16:10	3567	127	170	48.0
MF15062-B+	150"	2020 x 3230	16:10	3782	127	170	50.0

ARCHITECTS SPECIFICATION

The projection screen shall be an Australian made Screen Technics MasterFit Type B+ model _____ with Ember Grey Black Backed Fibreglass surface and shall be located where indicated on the plans. Installation shall be done in accordance with the manufacturer's instructions.

NOTES:

- MasterFit + boxes are 160mm longer than the standard MasterFit boxes
- This allows for mounting through its own hole using threaded rods at each end
- Mounting straps not used on this model

Manufacturing tolerance +/- 5mm on in ceiling box and slatrod
All dimensions are in (mm)
Always allow for removal of screen for servicing.

