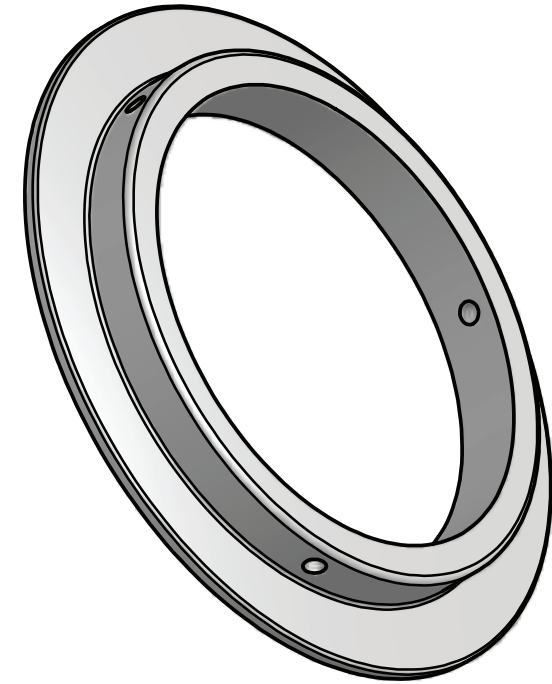
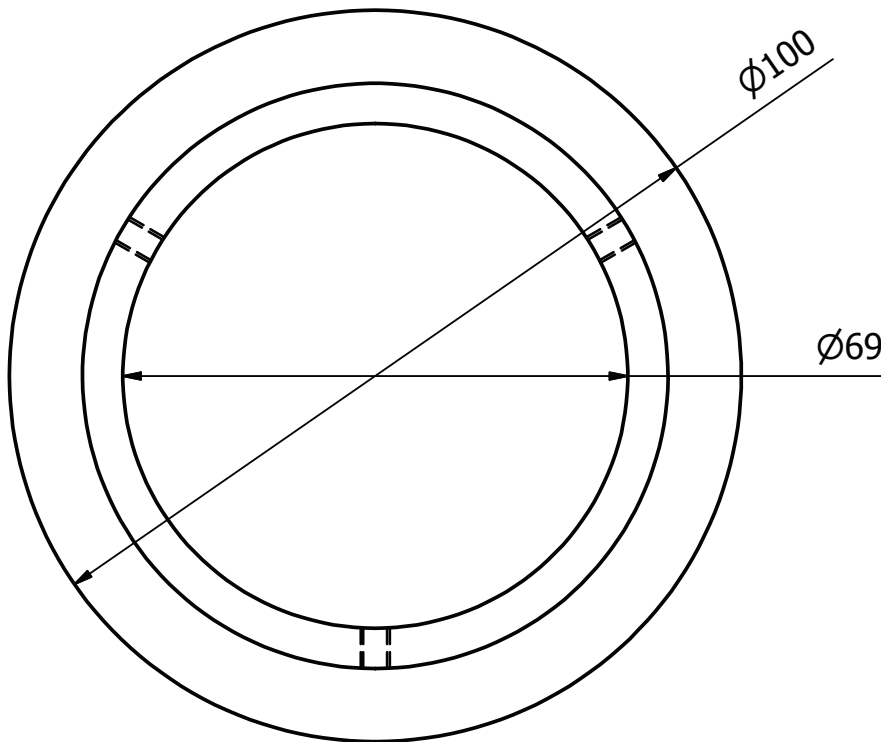


NOTES:

- Through Ceiling Mid-Pole Trim Kit available in:
 - White P/N 1421000W
 - Black P/N 1421000B
- This item is used to cover up hole made in the ceiling as the pole passes through. Please note it is a cover only and not designed to support any weight
- Unit is 10mm thick and is made from aluminium powdercoated to colour ordered
- Unit is complete with 3 off 4mm grub screws



Manufacturing tolerance +/- 5mm
 All dimensions are in (mm)
 If installed in ceiling always allow for removal for servicing.