

# 5 MOTORIZED FLUSH

Flush Mounted Tab-Tension Motorized Screen Specification Sheet



**SUGGESTED SPECIFICATIONS:** \_\_\_\_\_ projection screen(s), \_\_\_\_\_ (H) x \_\_\_\_\_ (W). This specification covers 3 Series Motorized is available as a flush mount, self-contained unit, with wall, ceiling, or suspended mount capability. The screen shall contain a quick connect connector that is mounted in the housing for easy plug-in connection to the motorized fabric and roller assembly. The motorized fabric and roller assembly to be installed in the case at the factory or at a later time at the job site. To be complete with integrated low voltage trigger input and three position control switch and cover plate. The flush unit to be fitted with flat ceiling trim to finish out installation. 3 Series Motorized screen materials are

to be precision cut on computer-driven fabric tables. All 3 Series Motorized screens include tab tensioning. Each screen can be ordered with up to 48" (1219 mm) of user adjustable black drop. Screens are available in 16:9, 16:10, 2.35:1, and Custom aspect ratios. Sizes are available up to 108 13/16" (2764 mm) high by 184" (4,674 mm) wide. Screen material to be Slate 1.2, Slate .8, Slate AT 1.2, Slate AT .8, Maestro White 1.1, Pure White 1.3, Pure Gray .85, Pure White AT 1.3, or Pure Gray AT .85. Please refer to a signed build drawing. If you require additional information not contained within this specification sheet, please contact us at sales@screeninnovations.com or 512-832-6939.

## Theater HDTV (16:9) Format Dimensions

Viewing Area H x W (C X B)		Standard Diagonal (A)		Overall Case Length (F)		Overall Flange Length (G)		Approx. Ship. Wt.	
In.	Mm	In.	Mm	In.	Mm	In.	Mm	Lbs.	Kg
39.25" X 69.75"	997 X 1,772	80"	2,032	84.813"	2,154	87.125"	2,213	94	43
45.125" X 80.188"	1,146 X 2,037	92"	2,337	95.25"	2,419	97.563"	2,478	103	47
49" X 87.188"	1,245 X 2,215	100"	2,540	102.25"	2,597	104.563"	2,656	109	49
51.938" X 92.375"	1,319 X 2,346	106"	2,692	107.438"	2,729	109.75"	2,788	113	51
53.938" X 95.875"	1,370 X 2,435	110"	2,794	110.938"	2,818	113.25"	2,877	116	53
58.813" X 104.563"	1,494 X 2,656	120"	3,048	119.625"	3,038	121.938"	3,097	124	56
65.188" X 115.938"	1,656 X 2,945	133"	3,378	131"	3,327	133.313"	3,386	137	62
78.438" X 139.438"	1,992 X 3,542	160"	4,064	154.5"	3,924	156.813"	3,983	182	83
88.25" X 156.875"	2,242 X 3,985	180"	4,572	171.938"	4,367	174.25"	4,426	200	91
98.063" X 174.313"	2,491 X 4,428	200"	5,080	189.375"	4,810	191.688"	4,869	220	100

## Wide (16:10) Format Dimensions

Viewing Area H x W (C X B)		Standard Diagonal (A)		Overall Case Length (F)		Overall Flange Length (G)		Approx. Ship. Wt.	
In.	Mm	In.	Mm	In.	Mm	In.	Mm	Lbs.	Kg
42.375" X 67.813"	1,076 X 1,722	80"	2,032	82.875"	2,105	85.188"	2,164	92	42
48.75" X 78"	1,238 X 1,981	92"	2,337	93.063"	2,364	95.375"	2,423	101	46
53" X 84.813"	1,346 X 2,154	100"	2,540	99.875"	2,537	102.188"	2,596	107	49
56.188" X 89.875"	1,427 X 2,283	106"	2,692	104.938"	2,665	107.25"	2,724	111	50
58.313" X 93.25"	1,481 X 2,369	110"	2,794	108.313"	2,751	110.625"	2,810	114	52
63.625" X 101.75"	1,616 X 2,584	120"	3,048	116.813"	2,967	119.125"	3,026	122	55
70.5" X 112.813"	1,791 X 2,865	133"	3,378	127.875"	3,248	130.188"	3,307	135	61
84.813" X 135.688"	2,154 X 3,446	160"	4,064	150.75"	3,829	153.063"	3,888	179	81
98.063" X 156.875"	2,491 X 3,985	185"	4,699	171.938"	4,367	174.25"	4,426	201	91

## CinemaScope (2.35:1) Format Dimensions

Viewing Area H x W (C X B)		Standard Diagonal (A)		Overall Case Length (F)		Overall Flange Length (G)		Approx. Ship. Wt.	
In.	Mm	In.	Mm	In.	Mm	In.	Mm	Lbs.	Kg
31.313" X 73.625"	795 X 1,870	80"	2,032	88.688"	2,253	91"	2,311	96	44
36" X 84.625"	914 X 2,149	92"	2,337	99.688"	2,532	102"	2,591	106	48
39.125" X 92"	994 X 2,337	100"	2,540	107.063"	2,719	109.375"	2,778	112	51
41.5" X 97.563"	1,054 X 2,478	106"	2,692	112.625"	2,861	114.938"	2,919	117	53
43.063" X 101.188"	1,094 X 2,570	110"	2,794	116.25"	2,953	118.563"	3,011	120	54
47" X 110.438"	1,194 X 2,805	120"	3,048	125.5"	3,188	127.813"	3,246	130	59
52.063" X 122.375"	1,322 X 3,108	133"	3,378	137.438"	3,491	139.75"	3,550	163	74
62.625" X 147.25"	1,591 X 3,740	160"	4,064	162.313"	4,123	164.625"	4,181	188	85
70.5" X 165.625"	1,791 X 4,207	180"	4,572	180.688"	4,589	183"	4,648	209	95
78.313" X 184"	1,989 X 4,674	200"	5,080	199.063"	5,056	201.375"	5,115	228	103

## PRODUCT NOTES

- The dimensions in the spec sheet apply to 24" (609 mm) drop only. Screens with larger drop may have different case dimensions. Please see our online calculator or call us at 512-832-6939
- Weights in this spec apply to Slate or Pure only and are estimates.
- (F) Length does not include flanges.
- All screens come with user adjustable black-drop between the case and viewing surface up to 24" (609 mm).
- All screens come with Wall Switch, IR Remote, and Low Voltage Trigger.
- Screen surface is tab-tensioned with user adjustability.
- Aspect ratios Available: 16:9, 16:10, 2.35:1, and Custom.
- For dimensions not listed, please see our online screen calculator. <http://dash.screeninnovations.com/screencalculator>
- Viewing surface widths of 116" (2,946 mm) or larger will utilize "commercial" case dimensions.

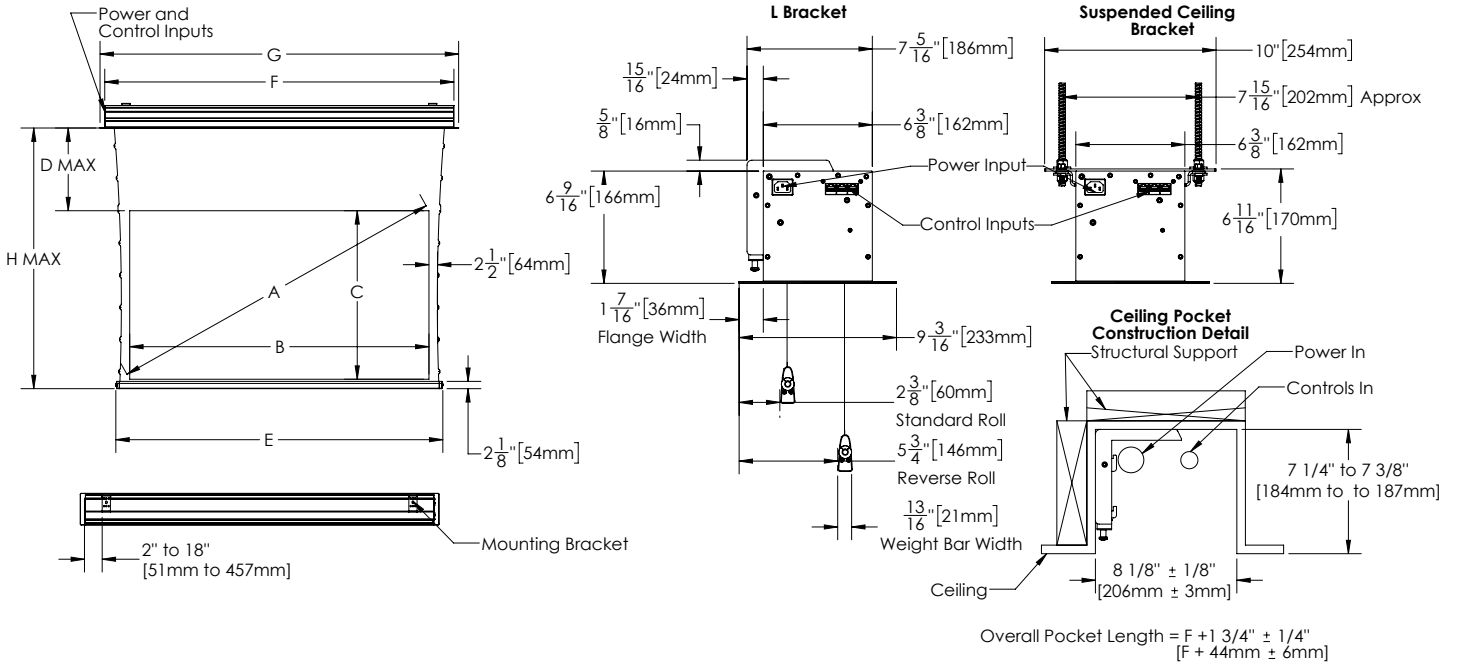
## MATERIAL INFORMATION

- All surfaces will be seamless.
- Max viewing height 98.063" (2,490 mm)
- Max viewing height for Maestro material is 120.813 (3,068 mm)

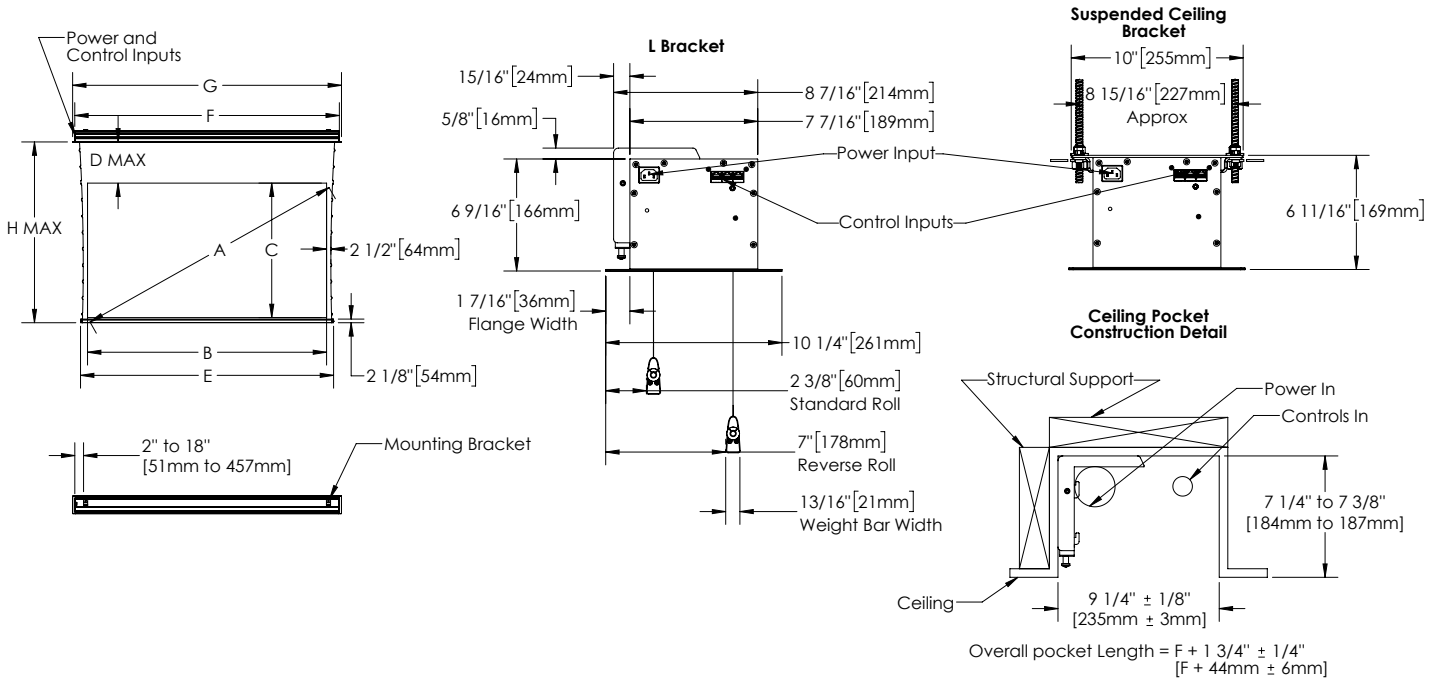
## WHEN ORDERING, MARK APPROPRIATE SELECTIONS

1. Select Size from Charts.
2. Select Screen Material:
  - Slate 1.2
  - Slate .8
  - Maestro White 1.1
  - Pure White 1.3
  - Pure Gray .85
3. Screen Options:
  - 36" (914 mm) Black Drop
  - 48" (1,219 mm) Black Drop
  - 220v Motor
  - RS232/485 Control & Cable
  - RF Control & Receiver
  - Suspended Ceiling Bracket
  - Pigtail
4. Select Power Input:
  - IEC
  - Pigtail
5. Select Screen Orientation:
  - Orientation A (Standard Roll / Standard View)
  - Orientation B (Reverse Roll / Standard View)
  - Orientation C (Standard Roll / Reverse View)
  - Orientation D (Reverse Roll / Reverse View)

**Compact Case**  
Viewing width < 116" (2,946 mm)



**Commercial Case**  
Viewing width > 116" (2,946 mm)



9715-B Burnet Rd. Ste 400  
Austin, TX 78758  
512-832-6939  
screeninnovations.com

SI5FLSS2.1  
© 2017 Screen Innovations.

<b>Project Name:</b>	_____
Architect:	_____
Contractor:	_____ Phone _____
Reseller:	_____ Phone _____